



CAMERA
凯莱锐

Product Manual

Shenzhen KaiMoRui Electronic Technology Co., Ltd.

CONTENTS



About Us



**Product
Introduction**



**Cooperative
Development**

Company Profile



KaiMoRui Electronics: A Professional Video Solution Provider

As an industry-leading video solution provider, we specialize in operating Japan's SONY FCB series, Hikvision series, South Korea's CM HD series, and independently develop our own brand, Kaichuangtuoda. We deeply engage in fields such as medical surgery live-streaming cameras, UAV aerial photography, industrial inspection video equipment, robot cameras, surveillance video, video conferencing, teaching and broadcasting, interrogation systems, infrared thermal imagers, infrared thermal imaging devices, and infrared cameras. We are committed to providing customers with integrated camera research, development, production, sales, and services.

Technical Strengths

HD Research & Development: We focus on the research, development, and sales of high-definition products, particularly in real-time HD image acquisition, transmission, and storage via SDI/HDMI/network IP interfaces, backed by a strong technical team and exceptional R&D capabilities.

Company Development



the year 2025

Deeply cultivating the industry for thirteen years, driving innovative applications with technology, actively exploring new markets, committed to the research and sales of high-definition products, with a strong technical team and R&D strength

the year 2016

With the accumulation of eight major scenarios such as medical surgery live streaming, industrial testing, and drone aerial photography, we have achieved service upgrades from hardware supply to system integration, accumulating rich experience

the year 2020

During the epidemic, we quickly entered into special fields such as infrared thermal imaging and tower crane monitoring, completed the integration of "visible light+infrared" dual spectrum technology, and formed a new growth pole driven by the dual wheels of epidemic prevention and control and industrial safety.

the year 2012

KaiMoRui Electronics was founded in Shenzhen, focusing on video technology solutions and operating SONY FCB/EVI series, Korean CM HD series, Hikvision series products, and Kaichuang Tuoda's own brand



• FCB-CR8530

The 8 million ultra-high-definition 4K camera, a 20x optical zoom lens can more flexibly capture scenes at different distances and angles. The super-resolution zoom function further improves the clarity and detail display capabilities of the picture. The wide dynamic function allows the camera to handle high-contrast scenes, ensuring the balance of light and dark details in the picture, and avoiding overexposed or underexposed situations. The fog-transmissive function can effectively reduce the impact of haze in the atmosphere and maintain the clarity and color reduction of the picture. Widely used in high-speed ball, high-end conference, drone, medical equipment and other fields.

Image sensor: 1/2.5 inch Exmor R CMOS

Effective pixel: about 8.51 million pixels.

Output pixel number: 3840*2160(QFHD)

Minimum object distance: 10mm (wide-angle end) to 1500mm (far end)

Size: 50.0x60.0x93.3mm.

Weight: 275g





• FCB-EV9520L

With 2.13 million effective pixels, this product utilizes Sony's latest full HD 1/2.8-inch color image sensor, achieving high sensitivity with a minimum subject illuminance of 0.009 lx 1. Equipped with full HD high resolution and 30x optical zoom, it outputs images at 1920x1080 (FHD). This product is applied in various industries, such as intelligent transportation, video conferencing, unmanned aerial vehicles, medical industry, underwater robots, industrial inspection, shipborne systems, and other fields.

- Super image anti-shake
- Good optical axis consistency
- Nighttime infrared mode
- Wide Dynamics (Wide-D)

Lens: f=4.3 mm to 129mm

Size: 50.0x60.0x89.7mm

Weight: 239g



Scan the code to learn more



• FCB-ER9500

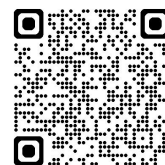
Equipped with Sony's STARVISTM2 image sensor, the image quality lighting conditions in extremely low light environment and brightest environment. With 25x optical zoom, you can capture incredible details at 4K high resolution, with 60 frames of video per second, from wide angle to telephoto end. Light weight and compact body help to reduce the system development cost

- Wide dynamic range (WDR)
- FCB-ER9500 has better wide dynamic function, and can process images in high contrast scenes, so that both dark parts and bright parts can be better preserved in detail
- Image stabilization
- Compared with FCB-ES/CS8230, FCB-ER9500 has stronger image anti-shake ability, which can effectively reduce the image blur and jitter caused by camera shake.
- Infrared night vision function
- FCB-ER9500 supports infrared night vision function, which can restore true color image output as much as possible in low light environment

Lens: 6.5mm-162.5mm

Size: 56 x 64 x 125mm

Weight: 439g



Scan the code to learn more



● FCB-CS8230

1.0-inch ExmorRTMCMOS, 20.47 million pixels, SONY 4K ultra-high definition autofocus camera module, which can output 4K images, has strong light suppression, fog penetration, noise reduction, image image stabilizer, automatic day-night switching, privacy shielding, and is suitable for high-end conference cameras, medical equipment and other application fields.

- Optical zoom 12x
- Super resolution zoom 18 times
- Visibility enhancement
- Automatic slow exposure reaction
- Automatic day-night switching (infrared filter switching)

Output pixel: 3840x2160

Video output: 4K to SD(480p, 576p) video formats

Digital zoom: 12x

Size: 65.1x70.0x134.8mm

Weight: 520g





• CM8205S

Full HD 3.2 megapixel high resolution, 5x global shutter zoom camera

- 1/3.1 "progressive scanning global shutter CMOS
- 80x AF zoom (5x optical zoom, 16th digital zoom)
- Support 1080p resolution, and the frame rate can reach 60/50/30/25fps.
- It supports 720p resolution and the frame rate can reach 60/50/30/25fps.
- Supports 1080i resolution and the frame rate can reach 60/50fps.
- True wide dynamic range
- 2D/3D noise reduction, defogging and digital image stabilization.
- UART, RS232-TTL interface (supporting Pelco-D/P, VISCA protocol)

Size: 35 x 33.8 x 46.7mm

Weight: 43g





• CM8210

10x optical integrated movement, high-quality 1080P(1920*1080) high-definition image quality, 1/3CMOSSensor, progressive scanning, effective pixel of about 2.3 million, high sensitivity mode-0.21LUX, powerful zoom capability: 10x optical zoom, 12x digital zoom, zoom up to 120x, image output signal: LVDS(SDI or.

Effective pixel: 1920(H)X1080(V)

Horizontal resolution: 1000TVL

Minimum illumination: 0.2Lux, 0.005Lux

Focal length: 4.7-47mm

Size: 43.6x45.5x67mm

Weight: 150g





• CM8220

- 1/3 "CMOS image sensor (about 2.3 million effective pixels)
- Progressive scanning technique
- Wide dynamic function
- Video signal output: HDLVDS: digital ITU-RBT.1120(YcbCr4:2:216bits).
- Simulation: SDC VBS (NTSC/PAL), 1.0VP-P75 ω ,
- 20x optical enlarger lens of F1.6 (20x optical amplification +12x digital amplification =240x amplification)
- Switching ICR infrared filter day and night
- Privacy masking function
- Communication protocols supporting remote control, such as Sony-VISCA and Pelco-D, etc.
- Size: 87x50x60mm
- Weight: 150g





• CM8236G

- 1/1.8" Sony Global Shutter CMOS Image Sensor (approximately 2.1 million effective pixels)
- Progressive scanning technology
- Wide dynamic range
- Switching ICR infrared filter day and night
- Privacy shading function
- 3D digital noise reduction
- 36x optical zoom (6mm~216mm) & 12x digital zoom
- Output HD-SDI, EX-SDI, HD, TVI2.0, CVBS
- Supports VISCA, PelcoD/P communication protocols, and can remotely control the camera through the host or controller.
- Scan system: Global shutter
- Size: 64x124x57mm
- Weight: 400g





• CM8236KB

- 1/2 "2.12 Million Sony CMOS Sensor
- Output resolution: 1080p60fps/30fps, 720p60fps/30fps.
- 36x optical (6mm ~216mm) & x32 digital amplification
- F1.5(wide)~F4.8(tele)
- Day and night switching induced infrared (ICR)
- Wide dynamic
- 3D digital noise reduction
- Privacy masking function
- Dynamic detection
- Fog penetration function
- Communication protocols supporting remote control: SONY-VISCA, Pelco-D/P
- Output interfaces: LVDS, EX-SDI, CVBS
- Size: 55.6 x 64 x 124mm
- Weight: 400g





● CM8810E

- 1/2.8 "high sensitivity image sensor, meeting the requirements of starlight monitoring.
- 10x optical zoom, automatic focusing, fast and accurate focusing.
- The video output can reach up to 3840x2160@30fps.
- Support electronic fog transmission, strong light suppression, backlight compensation, wide dynamic, and adapt to different monitoring environments.
- Support ICR infrared filter switching to realize real day and night monitoring.
- Support independent configuration of two sets of parameters day and night.
- Three-stream package capability, meeting the requirements of real-time streaming and storage streaming with different bandwidths and frame rates.
- Support intelligent analysis such as trip wire and area invasion.
- The advanced H.265 algorithm has higher compression ratio.
- Support ONVIF/GB28181, and seamlessly access mainstream platforms and other network devices.
- Complete functions: heartbeat, PTZ control, intelligent alarm, ROI area enhancement, customized OSD.
- Size: 64.1x45.2x50.6mm
- Weight: 152g





• CM8258E-IOS

58 times 2 million optical anti-shake intelligent starlight movement with focal length of 6.3 ~ 365 mm.

- Clearer: Multi-blade aperture, multi-piece aspheric glass and excellent antireflection coating design can greatly reduce dispersion and improve resolution.
- Better environmental adaptability: with optical temperature compensation and optical fog transmission. Three sets of filters, suitable for various environments and various lasers.
- Smaller and lighter: The application of advanced multi-group linkage optical technology enables the lens to achieve 365MM zoom with a length of 145MM, and the whole zoom takes only 8 seconds.
- Low distortion: when the horizontal viewing angle reaches 63.4, the absolute distortion of TV at W and T terminals is less than 1%, which is more suitable for AI image recognition applications.
- Easier integration: integrated design, optional 485 interface and TTL interface, easy to integrate into various ptz and turntable.
- Complete functions: heartbeat, PTZ control, intelligent alarm, ROI area enhancement, customized OSD.

Size: 145x82x96mm

15

Weight: 930g



Scan the code to learn more



• CM8123E

3.5 times 12 million intelligent starlight network movement

- 1/2.3 "high sensitivity back-illuminated image sensor with ultra-high definition image quality.
- 3.5 times optical zoom, 3.85-13.4 mm, no distortion, automatic focusing, fast and accurate focusing.
- Lightweight and small size, specially designed for unmanned aerial vehicles and handheld devices.
- The video output can reach up to 4000x3000@10fps.
- Support electronic fog transmission, strong light suppression, backlight compensation, wide dynamic, and adapt to different monitoring environments.
- Support ICR infrared filter switching to realize real day and night monitoring.
- Three-stream package capability, meeting the requirements of real-time streaming and storage streaming with different bandwidths and frame rates.
- The advanced H.265 algorithm has higher compression ratio.
- Support ONVIF/GB28181, and seamlessly access mainstream platforms and other network devices.

Size: 55x30x40mm

Weight: 55g





• CM8230B

- 1/3 "2.12 million Panasonic CMOS sensor
- Output: 1080p60fps/30fps, 720p60fps/30fps,
- 30x Optical (4.3mm ~129mm) & x32 Digital Amplification
- Day and night switching induced infrared (ICR)
- Wide dynamic
- 3D digital noise reduction
- Privacy masking function
- Dynamic detection
- Fog penetration function
- Communication protocols supporting remote control: SONY-VISCA, Pelco-D/P.
- Output interfaces: LVDS, EX-SDI, CVBS.

Size: 50 x 60 x 93mm

Weight: 240g





• CM8240KB

- 1/2.8" Sony STARVISCMOS sensor, effective pixels: 2.13 million
- Built-in 40x optical zoom lens, highly reliable
- It has autofocus, automatic aperture, automatic D&N, zoom functions
- Full HD resolution 1920x1080p60/50/30/25fps 1280x720p60/50/30/25fps
- Day and Night (ICR)
- ICR will automatically start according to ambient light, so that the camera can work effectively in day and night environments.
- DNR (digital noise reduction, 2D+3D)
- Digital noise reduction technology eliminates noise, resulting in a clear image.
DNR function of this camera
- Reduce noise in image brightness with adaptive 2D filters, and reduce noise caused by motion by adaptive 3D filters

Size: 54 X 64 x 101mm

Weight: 355g



Scan the code to learn more



• CM8252D

- Support digital signal LVDS and network signal video output mode.
- The highest resolution can reach 2 million pixels (1920×1080), and the maximum output can be full HD 1920×1080@60fps real-time images.
- Star-level ultra-low illumination, 0.0005Lux/F1.4 (color), 0.0001Lux/F1.4 (black and white), 0LuxwithIR.
- Support 52 times optical zoom and 16 times digital zoom.
- ICR infrared filter automatically switches to realize real day and night monitoring.
- Support 3A control (auto white balance, auto exposure, auto focus)
- Support backlight compensation, automatic electronic shutter and other functions to adapt to different monitoring environments.
- Support 3D digital noise reduction, strong light suppression, electronic image stabilization and 120dB optical wide dynamic.
- Support optical fog penetration, greatly improving the foggy effect of images.
- Support Bluetooth, WiFi and 4G function module expansion.
- Supports MicroSD/SDHC/SDXC card storage with a maximum of 256G.
- Rich interfaces, convenient function expansion.
- Small size, low power consumption, convenient access to ball machine and pan/tilt.

Size: 175.5 x 75 x 78mm

Weight: 925g





• CM8210LE

2.3 million pixels, 10x optical zoom, with privacy masking, mirroring function, 3DNR, flashing, electronic zoom, sharpness, defogging and other functions

- 1/2.86-inch progressive scan CMOS image sensor
- Focal length 5mm~50mm,
- DIS (Digital Image Stabilization Technology)
- High-quality 1080P (1920*1080) high-definition image quality
- Communication protocol that supports remote control: SONY-VISCA protocol
- Video output supports LVDS or network output

Horizontal resolution: 1000TVL

Size: 60 x 40 x 50 mm

Weight: 45g



Scan the code to learn more



• CM8230LE

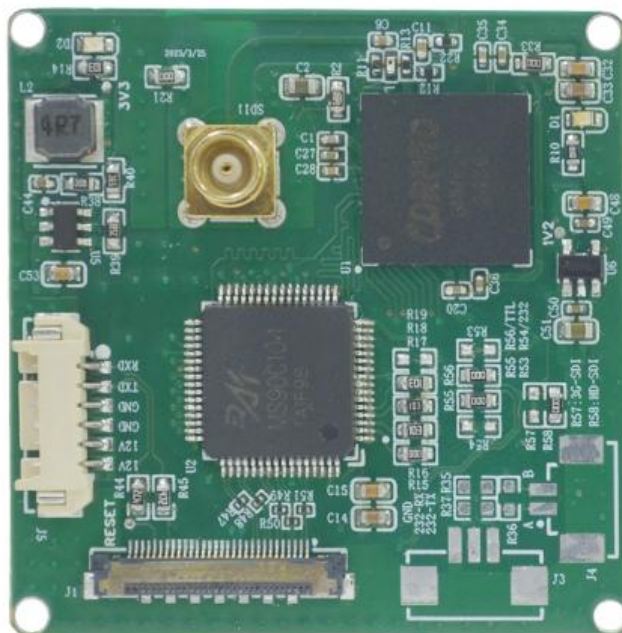
- The focusing speed is increased by 30%, which is smoother.
- Focus triggering is more accurate and intelligent.
- 4 million image input
- 4 million resolution, up to 60 frames
- 30x optical zoom
- The latest sensor, excellent picture quality.
- UVC function
- SmartH265/264 ultra-low bit rate technology
- It also supports digital (Sony LVDS), network and USB2.0 interfaces.
- Support Onvif, PELCO, VISCA and VISCAOVERIP protocols.

Size: 50 x 60 x 102 mm

Weight: < 0.5kg

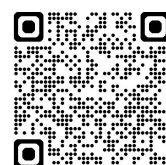


Scan the code to learn more



• CM2001S-G

CM2001S-G This SDI coding control panel is reduced in size and adopts a single 4-layer military-grade PCB board. Choose copper MCX connector, imported chips from abroad. Its products are widely used in industrial inspection, police equipment, mobile law enforcement, judicial interrogation, digital court, medical equipment, road monitoring, unmanned aerial vehicles, image inspection equipment and other fields, and can provide customized OEM/ODM services. The video formats support 720P50/60, 1080I50/60, 1080P25/30, 1080P50/60 and other formats. Cameras support the access of all kinds of domestic cameras connected to SONYFCB, CM full series movements and SONYVISCA protocol. The control protocols support SONY,VISCA, Pelco-P and Pelco-D, and the baud rate can be selected: 240048009600 (default), with more than 115200 options.





• KC9404M

- 4 megapixel progressive scanning 1/1.8 "CMOS
- The maximum resolution can reach 2560×1440.
- The focal length is 2.8mm~12mm, and the field of view is extremely wide.
- Minimum illumination: color 0.005lux@F1.6
- Support ICR infrared filter type automatic switching
- Focus quickly and accurately
- Support 3DDNR, wide dynamic 120db
- Support H.265 efficient compression algorithm, greatly reducing the code rate.
- Network output
- Rich interfaces, convenient function expansion, and seamless access to mainstream platforms and other network devices.
- Small size and low power consumption
- Convenient access to ball machine and pan/tilt

Size: 49 × 48 × 70 mm

Weight: 170g





• KC9430M

- Support deep learning algorithm, support face capture, and capture up to 5 faces at the same time.
- Support switching to road monitoring mode, and provide accurate classification detection and alarm for people and vehicles.
- Support switching to intelligent detection such as area intrusion detection, cross-border detection, entering area detection and leaving area detection.
- 4 megapixel progressive scanning 1/2.8 "CMOS
- The maximum resolution can reach 2560X1440.
- 30 times optical magnification, the focal length is 4.8-144 mm.
- Minimum illumination: color 0.05lux@F1.6
- Support ICR infrared filter type automatic switching
- Focus quickly and accurately, with wide dynamic range of 120db.
- 3D-DNR supports H.265 efficient compression algorithm, which greatly reduces the bit rate.
- Rich interfaces, convenient function expansion.
- Network output, small size and low power consumption.
- Convenient access to ball machine and pan/tilt
- Seamless access to mainstream platforms and other network devices

Size: 50 x 60 x 102mm

Weight: 285g





• KC9440M

- Support deep learning algorithm, support face capture, and capture up to 5 faces at the same time.
- Support switching to road monitoring mode, and provide accurate classification detection and alarm for people and vehicles.
- Support switching to intelligent detection such as area intrusion detection, cross-border detection, entering area detection and leaving area detection.
- 8 million pixels, progressive scanning 1/1.8"CMOS.
- 40 times optical magnification, the focal length is 6.8 mm ~ 272 mm.
- Minimum illumination: color 0.005lux@F1.5
- The maximum resolution can reach 3840×2160.
- Support gyro anti-shake
- Support ICR infrared filter type automatic switching
- Support 3DDNR, wide dynamic 120db
- Focus quickly and accurately
- Support H.265 efficient compression algorithm, greatly reducing the code rate.
- Rich interfaces, convenient function expansion, and seamless access to mainstream platforms and other network devices.
- Network output
- Convenient access to ball machine and pan/tilt
- Small size and low power consumption

Size: 65 × 71 × 149mm

Weight: 420g



Scan the code to learn more

Thermal imagig series



• HM-TM53-10RG/UT

Industrial temperature measurement movement is a miniaturized integrated temperature measurement product, the main features of small size, low power consumption, can be integrated into various types of equipment, such as robot head, individual helmet, pod and so on

[Features]

High-sensitivity vanadium oxide uncooled detector with 384×288 resolution

Full screen temperature measurement

Support standard UVC protocol

Support 2 temperature measurement range: -20°C~150°C and 100°C~550°C

Temperature measurement accuracy: $\pm 2^{\circ}\text{C}$ or reading $\pm 2\%$ (take the maximum value)

Support thermal imaging detector burn protection

Compact design for easy integration

[Application Scenarios]

UAV pod integration, intelligent equipment integration, etc. Small size, low power consumption

Size: 29.8 × 20 × 20 mm

Weight: $\leq 22\text{g}$



Thermal imagig series



• HM-TM56-19RG/UT

Industrial temperature measuring movement

[Functional features]

High sensitivity vanadium oxide uncooled detector, supporting 640×512 resolution.

Support full-screen temperature measurement

Support standard UVC protocol

Supports two temperature ranges: -20°C~150°C and 100°C~550°C

Temperature measurement accuracy: 2°C or reading 2% (whichever is greater)

Support the anti-burn function of thermal imaging detector

The model is compact and easy to integrate.

[Application scenario]

UAV pod integration, intelligent equipment integration, etc.

Size: 37.7×20×20mm

Weight: ≤32g



Scan the code to lrn more

Thermal imagig series



• HM-TM56-9RG/UT

The industrial temperature measuring movement is a miniaturized temperature measuring integrated product. Its main features are small size and low power consumption. It can be integrated into various types of equipment, such as robot pan/tilt, individual helmet and pod.

[Functional features]

High sensitivity vanadium oxide uncooled detector, supporting 640×512 resolution.

Support full-screen temperature measurement and expert temperature measurement.

Support UVC protocol

Supports two temperature ranges: -20°C~150°C and 100°C~550°C

Temperature measurement accuracy: 2°C or reading 2% (whichever is the maximum)

Compact design and easy integration.

[Application scenario]

Robot integration, fire protection integration, security integration, etc

Size: 20×20×20mm (excluding lens)

Weight: ≤23g



Thermal imagig series



• KC-2IR06AN

High resolution 640×512, high sensitivity vanadium oxide uncooled detector

Low power consumption < 2.2W

NETD < 35mk@F1.0,25°C

Real-time image output, supporting auto-focus and gray alarm functions.

Support IP access and rich image adjustment functions.

Optional 50MM, 75MM, 20-100MM, 30-150MM lenses.

The device supports TF card function.

Support the control of PTZ by using PELCO-D and other protocols through 485 interface.

Support system double backup function to ensure that data is not lost when power is cut off.

Support SDK access and control, support ONVIF protocol.

Size: 40×41×65mm

Weight: < 111g



Thermal imagig series



model	KC-2R06C-9	KC-2U06C-9	KC-2R03C-9	KC-2U03C-9	KC-2R02C-9
output interface	CVBS	CVBS、USB (UVC)、BT.656 Optional	CVBS	CVBS、USB (UVC)、BT.656 Optional	CVBS
resolution ratio	640*512		384*288		256*192
lens	9mm lens				
detector type	High Sensitivity Vanadium Oxide Uncooled Detector				
Cell size	12μm				
NETD	≤40 mK				≤50 mK
Pseudo-color mode	Support White Heat, Black Heat, Fusion 1, Rainbow, Fusion 2, Iron Red 1, Iron Red 2, etc.15 models				
weight	≤23g				≤21g
size	37.82×20×20mm	26×26×21.1mm	37.82×20×20mm	26×26×21.1mm	38.58×20×20mm

Thermal imagig series



model	KC-2R06U-9	KC-2R06U-15	KC-2R06U-19
output interface	USB		
resolution ratio	640*512		
lens	9mm lens	15mm lens	19mm lens
detector type	High Sensitivity Vanadium Oxide Uncooled Detector		
Cell size	12μm		
NETD	≤40mK		
Pseudo-color mode	Support White Heat, Black Heat, Fusion 1, Rainbow, Fusion 2, Iron Red 1, Iron Red 2, etc.15 models		
weight	≤23g	≤28g	≤21g
size	29.8×20×20mm	34.54×20×20 mm	37.04×20×20mm

Thermal imagig series



model	KC-2R03U-9	KC-2R03U-15	KC-2R03U-19
output interface	USB		
resolution ratio	384*288		
lens	9mm lens	15mm lens	19mm lens
detector type	High Sensitivity Vanadium Oxide Uncooled Detector		
Cell size	12μm		
NETD	≤40mK		
Pseudo-color mode	Support White Heat, Black Heat, Fusion 1, Rainbow, Fusion 2, Iron Red 1, Iron Red 2, etc.15 models		
weight	≤22g		
size	29.8×20×20 mm		

Thermal imagig series

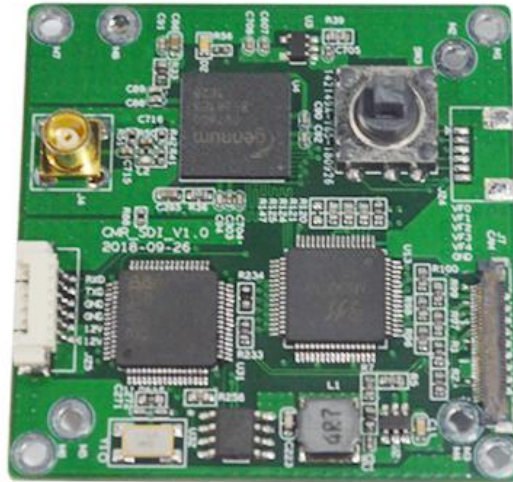


model	KC-2R02U-9	KC-2R02U-15
output interface	USB	
resolution ratio	256*192	
lens	9mm lens	15mm lens
detector type	High Sensitivity Vanadium Oxide Uncooled Detector	
Cell size	12μm	
NETD	≤35mK	≤50mK
Pseudo-color mode	Support White Heat, Black Heat, Fusion 1, Rainbow, Fusion 2, Iron Red 1, Iron Red 2, etc.15 models	
weight	≤20g	≤22g
size	20×20×20mm	32.09×20×20 mm

Thermal imagig series



model	KC-2C06UC-9	KC-2C03UC-9	KC2C02UC-10
output interface	CVBS/ MIPI/ USB/ Type-C/ LVDS		
Video output	UVC/ BT.656/ MIPI		UVC/CVBS
resolution ratio	640*512	384*288	256*192
fps	25		
lens	9-25mm lens	9-13mm lens	4-10mm lens
Detector type	Non-refrigerated vanadium oxide focal plane detector		
Cell size	12μm		
Typical Power Consumption @25°C	<0.7w		<0.5w
vibration	6.06g,Random vibration, all axial directions		
size	17.3x17.3x10.8mm (No lens tail plate)		
weight	5g(No lens tail plate)		



• CM2001S

This SDI coded control board uses a single 6-layer military-grade PCB board with gold-plated surfaces to facilitate tinning and avoid dummy welding. Copper MCX connector, ARM processor, and original imported chips from abroad. Its products are widely used in industrial inspection, police equipment, mobile law enforcement, judicial interrogation, digital courts, medical equipment, road surveillance, drones, image inspection equipment and other fields. It can provide customized OEM/ODM services, and the camera supports access to various domestic cameras under the SONYFCB, CM full series movements and SONYVISCA protocol.



Scan the code to lrn more

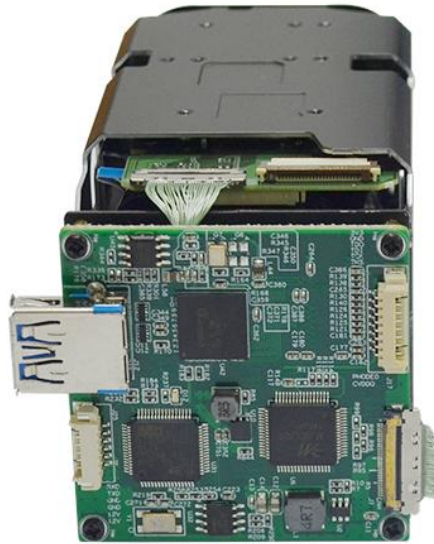


- **CM2001H**

This HDMI control board uses a single 6-layer military-grade PCB board with gold-plated surfaces to facilitate tinting and avoid dummy welding. Copper HDMI connector, ARM processor, and original imported chips from abroad. Its products are widely used in industrial inspection, police equipment, mobile law enforcement, judicial interrogation, digital courts, medical equipment, road surveillance, drones, image inspection equipment and other fields. It can provide customized OEM/ODM services and support various domestic cameras connected to the SONYVISCA protocol.



Scan the code to lrn more



- **CM2001U**

The USB3.0 encoder is suitable for the high-definition digital integrated camera movement with SONYFCBEV/CVEH/CH series, CM series and SONY standard interface. It connects the movement through the LVDS interface to automatically identify the movement's high-definition video format, uncompressed high-definition TV video data, supports 720P1080P up to 60 Hz, and no analog to digital conversion is performed in the 4:2:2YUV format, thus ensuring excellent output image quality. Make the shooting images of the HD integrated camera perfectly displayed on the computer screen. The module receives the digital video signal at the input end and sends UVC (USB video class)-compliant data packets containing the digital video load to the connected host. Always run as a super high-speed USB3.0 device, and the operating environment supports Microsoft Windows 7/Windows 8/WINDOWS10 and other UVC operating systems



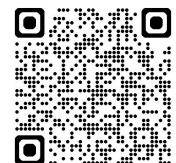
Scan the code to learn more

Code board



• CM2001M

This control board HDMI to MIPI signal uses a single 6-layer military-grade PCB board with gold plating on the surface, which is convenient for tinning and avoiding dummy welding. Its products are widely used in industrial inspection, police equipment, mobile law enforcement, judicial interrogation, digital courts, medical equipment, road monitoring, drones, imaging inspection equipment and other fields. It is paired with the CM2002U tail plate to support CM series and Sony 6300, 9520I, 7520 cameras. HDMI maximum input resolution is 4K (3840×2160@30Hz), and CM2002U supports up to 1080P/60. Control protocol support: SONYVISCA, PELCO-P, PELCO-D, AUTO (default) can be selected



Scan the code to learn more



- **CM200Z**

The company's SONY high-definition movement HDMI coded control panel is a specially developed and designed for SONYFCB HD integrated movement module. It can be compatible with SONY high-definition FCB-CV7310, FCB-CV7520, FCB-EV7500, EW9500H, EW9500M, EW9500L and other movement modules. 8530 does not support compatible control. This coded control board is widely used and can be used in intelligent flight equipment and medical equipment.



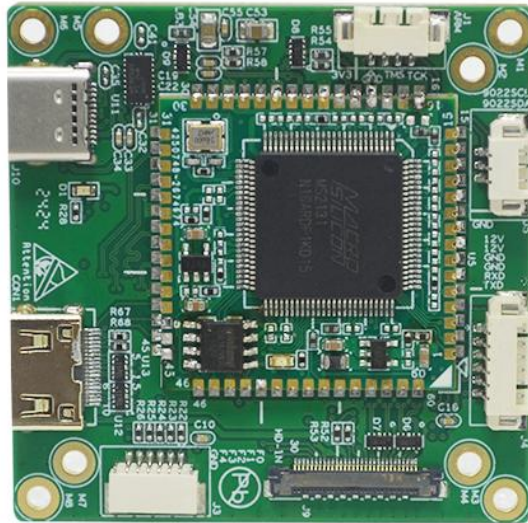


• CM2004SH

12G-SDI coded control board, directly connected to the SONYFCB8 series ultra-high-definition integrated camera movement, with a maximum output resolution of 8 million pixels (3840*2160P60) 12G-SDI and HDMI synchronous output, supports RS485 control and TTL control (RS232C expansion), supports wireless remote control, supports external button control, supports power-off memory function, and supports 128 preset positions



Code board

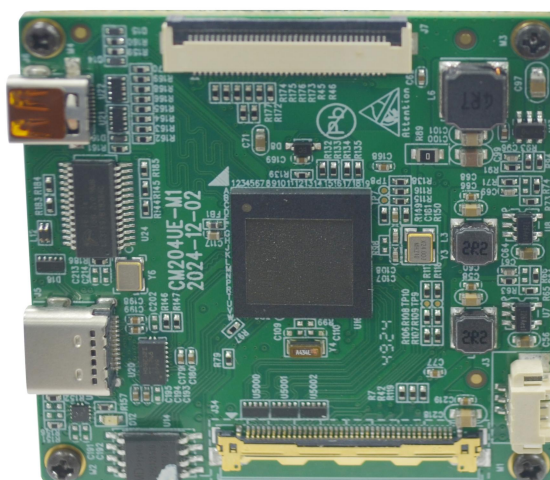


• CM2002U

The SONY high-definition movement USB coded control board developed and designed by our company. The single tail panel can only connect to Sony 8300, 8530 and other movements, and supports USB3.0 and USB2.0 high-definition video output. (The default maximum resolution is 1920×1080@60Hz), HDMI maximum input resolution is 4K (3840×2160@30Hz), HDMI loop out function, maximum output resolution is 4K (3840×2160@30Hz)

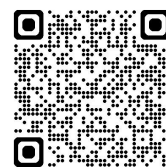


Scan the code to learn more



• CM204UE

H.264/265IP video streaming, RTMP live broadcast, video output: 4K-HDMI, 4K-network USB3.0 extension, support input resolution: up to 4K, 1080P, 720P, support ViscaOverIP and ONVIF protocol compatible with GB28181, power supply: DC12V1A or above, provide 4KIP and HDMI video output, as well as improve image quality and operation performance. True dual output remote 4KIP video streaming and control. HDMI and IP video formats can be set independently. (Extended USB output), comprehensive image parameter settings are suitable for broadcast and professional AV applications, and enhanced adaptive zoom and ultra-slow control combine to provide an accurate and effective operating experience.



Scan the code to learn more

Honors and Qualifications



Partners

SONY

Panasonic



海康威视
HIKVISION



Contact Us



Technical support



Business consultation



Business official account



Enterprise TikTok

- 🏠 Shenzhen KaiMoRui Electronic Technology Co., Ltd.
- 📍 Room 901-903, Building 2, Shenzhen Tebian Science and Technology Park, Buji Street, Longgang District, Shenzhen
- 🌐 www.cmr-cctv.cn
- ☎ 13798538021 (Technical support) 13480961026 (Business consultation)
- ✉ 714040940@qq.com